



Needing some help with your 2017 tax returns?

Belastingaangifteservice.com is here to help you
Whether you want help with your taxes as an individual or an entrepreneur, belastingaangifteservice.com has been a trusted advisor for years.

income tax returns / applications, modifications, provisional refunds / surcharges ... and more.

How to prepare:

IDENTIFICATION PROOF

- You and your partner

IDENTIFICATION PROOF CHILDREN

- Minor children living at home-- names, birthdates

30% TAX RULING

- 30% tax ruling letter

YOUR INCOME

- Annual statements and recent payslips for you and your partner, from any employer or benefits agency.
- Statement of a spouse receiving alimony, or from recipients of your freelance work.
- Other income.

YOUR OWN PROPERTY

- Balance of your mortgage, and statement on January 1 through December 31 (annual)
- Property tax bill (WOZ) or water tax you paid
- Mortgage interest you paid (annual), and date of the mortgage loan
- You increased your mortgage: statement and notes proving the amount of the additional loan
- Remodeling and home improvement: receipts and notes: balance statement, loan interest paid
- You bought a new (different) home: appraisal fees, inspection fees, settlement of the sale document, closing fees, brokerage fees, notary fees, legal fees, bridging loan costs, bank guarantee, commission, NHG, other related documents
- You have done new construction: agreement, costs, fees
- Family mortgage tax registration certificate
- Your life insurance policy linked to your mortgage

GIFTS

- Records of donations to charities, with an ANBI mark

MAINTAINANCE

- Payments you made to a partner or former partner for alimony
- Child support is not deductible since 2016

STUDY

- Cost of an EVC procedure --- (Recognition of Prior Learning)
- Expenses for tuition, textbooks, and study materials
- Compensation or employer's disposal study



HEALTH

- Deductions for medical expenses are now very limited, since 1 January 2009. To determine if your expenses are above the threshold, please provide: declaration statements of the health insurance company, expenditures not submitted to your insurance company, records of mileage/kilometers to attend medical appointments (appointments cards) and notes of prescribed devices (e.g., hearing aids).
It is possible that the following costs are still deductible:
 - Personal contributions for medicines and/or medical treatment (not Own Risk).
 - Dental or other medical expenses that are not reimbursed by the insurer.
 - Medically prescribed diet and/or travel expenses for seeing doctors.
 - Devices (not glasses and lenses)





Our advisors walk with you through all parts of the declaration. Everything is completed right the first time, saving you lots of time.

YOUR RETIREMENT

- Annuity premiums paid to an insurance company
- Perhaps WIA shortfall premium deducted from the your salary
- Annuity with Clause sheets and proof of payment of the premium
- Last pension statement showing the pension accumulation (also called "Factor A")

YOUR BANK ACCOUNTS, INCLUDING SAVINGS, SECURITIES AND OTHER INVESTMENTS

- Balance statements of all bank accounts, investments, second home, and other receivables/assets.
- Savings of minor children managed by parents
- Annual balance statements of all your bank and savings accounts showing amount as of 1 January 2017
- Balance of your investment accounts on 1 January (annual review, including paid dividend)
- Amount of debt as of 1 January including revolving credit, personal loans, and/or student loans
- Green investments balance, social investments at 1 January
- Insurance company endowment - annual value statement
- Balances of foreign banking, assets and savings, economic value of property abroad

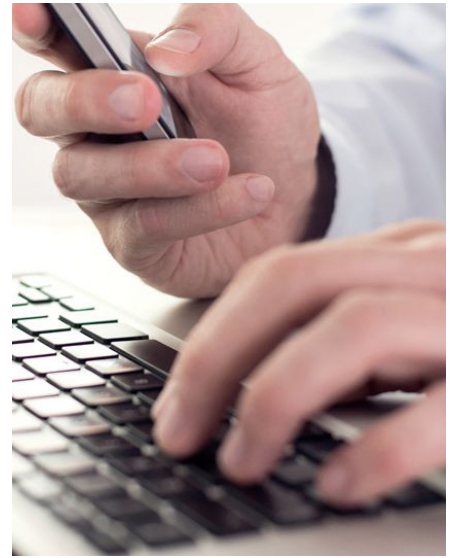
PROVISIONAL ADJUSTMENT/SUPPLEMENTS

- Your temporary stop(s) (refund) Income Tax, Health Insurance
- Your disposal care allowance, housing allowance, child allowance, childcare allowance

AVERAGING INCOME

- It may be beneficial for you to do positive averaging on variable income rates, especially if your 2017 income was higher than usual.
- Final tax declarations for previous years may be needed as reference.





Checklist for tax entrepreneurs / freelancers 2017

To maximize your profit return, we need the following documents:

- Copy of the KVK excerpt from Chamber of Commerce
- VAR statement
- Balance 2016, and if available 2017
- Profit and loss account in 2016 and, if available, 2017
- Income tax return in 2016 because of the relevance of the declaration previous year
- Invoices for business investments made (minimum of € 450, excluding VAT)
- Bank statements from the bank account as of Dec 31, 2017 and by Jan 1, 2017.
- Specified aggregate list by Dec 31, 2017 of outstanding receivables (debtors).

- Specified aggregate list by Dec 31, 2017 of partly uncollectible receivables (bad debts).
- Overview of your work performed - in monetary terms - in 2017 which will be invoiced in 2017. Amount should be stated excluding VAT.

- Amount to pay a specified aggregate list by December 31, 2017 and similar bills to suppliers (creditors)
- Overview of any outstanding charges to be billed to you in 2017 relating to the year 2017. Amount is net of VAT.

- If you have a stock of goods, provide a specified aggregate list as of Dec 2017. The stock should be valued at historical cost or market value, taking obsolescence into account. (Unusable, damaged, or -verkoopbare goods)

- Your balance of cash as of Dec 31, 2017 and Jan 1, 2017
- Quotation investments (more than EUR 450 excl. VAT) incurred in 2017 and in which 2017 delivery takes place.
- Copies of all reports and? nourishments? sales tax from 2017 and the last period of 2016.
- Copies of possibly in 2017 completed lease and other contracts.
- An itemized list totaling the business mileage of your private car in 2017

- Statement as to whether or not you are eligible for self-employment in 2017.
- You will need at least 1,225 hours paid to retain your enterprise and to comply with certain conditions. Tax Authorities can ask you to provide a list showing, for example, the number of billable hours. We advise you to keep records of hourly business activity.

customer testimonials:

"I have been living for 3 years in the Netherlands and I found the Dutch tax system very complicated until I got in touch with a tax professional via belastingaangifteservice.nl. I appreciate your services tremendously and I recommend it to everyone. Thanks a lot!"

BAS